

Quality Management System for Nantex Synthetic Latex

A. Quality Policy:

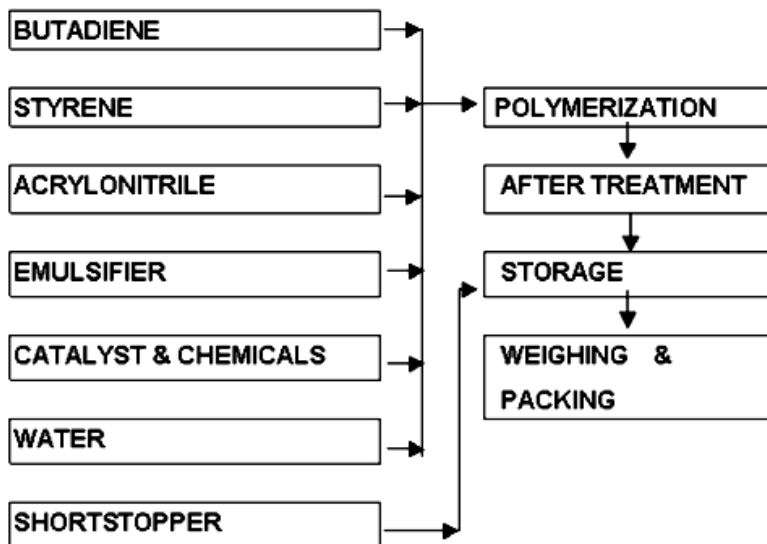
We persistently pursue growth and excellence through systematic operation and continuous creation of value to achieve full customer satisfaction while in accordance with the laws and regulations here and abroad.

B. Quality Management:

1. Quality Control System

- a. NANTEX has adopted the Distributed Control System (DCS) in its production processes in order to minimize human error, thus assuring product quality consistency.
- b. To further assure consistency in product quality, Nantex has also adopted the Statistical Process Control (SPC) system and has been utilizing the SPSS QI Analyst statistical software.
- c. Quality Assurance on ISO 9002 was certificated by THE BUREAU OF COMMODITY INSPECTION AND QUARANTINE OF TAIWAN, R.O.C. in Nov. 1995. It was updated to ISO 9001 in Feb, 2003.

2. Manufacturing Process Flow Chart

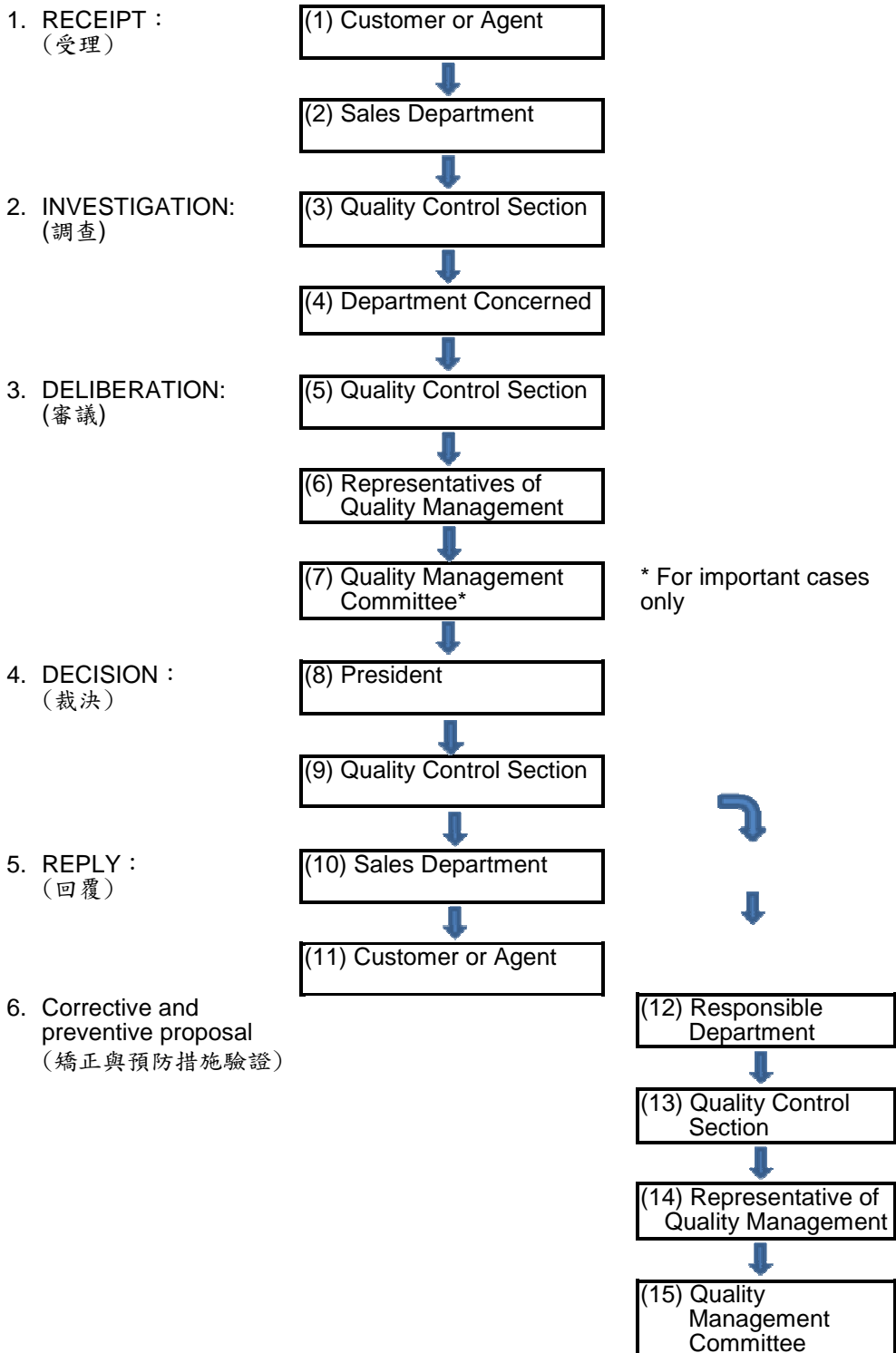


3. Quality Control Items:

No.	Test Items	Unit	Test Method
1	Total Solid,	%	NANTEX B-003B
2	pH		NANTEX B-006
3	Viscosity,	cps	NANTEX B-005

4	Specific Gravity,		NANTEX B-016
5	Surface Tension,	dyne/cm	NANTEX B-010
6	Coagulum,	%	NANTEX B-009

C. Customer Complaint Flow Diagram



D. Packaging

DOMESTIC:

- a. 220 Kg Drum.
- b. Tank lorry.

EXPORT:

- a. 220 Kg Drum, 17.6 MT/20 feet container.
- b. 1MT Tote, 20 MT/20 feet container.
- c. 20 MT ISO tank.
- d. 20 MT Flexi-bag.

E. Properties and Storage Precautions:

1. Properties,

No.	Properties	Typical Value
1.	Miscibility with water	Miscible
2.	Specific gravity	0.95 ~ 1.05
3.	Appearance	Milk Liquid
4.	Odor	Mild odor

2. Storage Precautions,

- a. Latex should be stored in a cool and dry place, within a temperature range of 5°C ~ 30°C, and away from direct sunlight to maintain optimum quality.
- b. Latex not used within 6 months should be tested to determine if any of the properties have changed.
- c. If dry film and small coagulum had occurred during storage period, filter it with 80 mesh stainless wire gauge.

3. Fire and Explosion Hazard Data,

- a. Ignition Temperature: NA.
- b. Extinguishing Media: Dry polymer could burn. We recommend water, ABC dry chemicals, protein-type air foams to extinguish.